



UTMpro

License for the web-based UAS Traffic Management System (UTM) for planning and tracking UAS flights

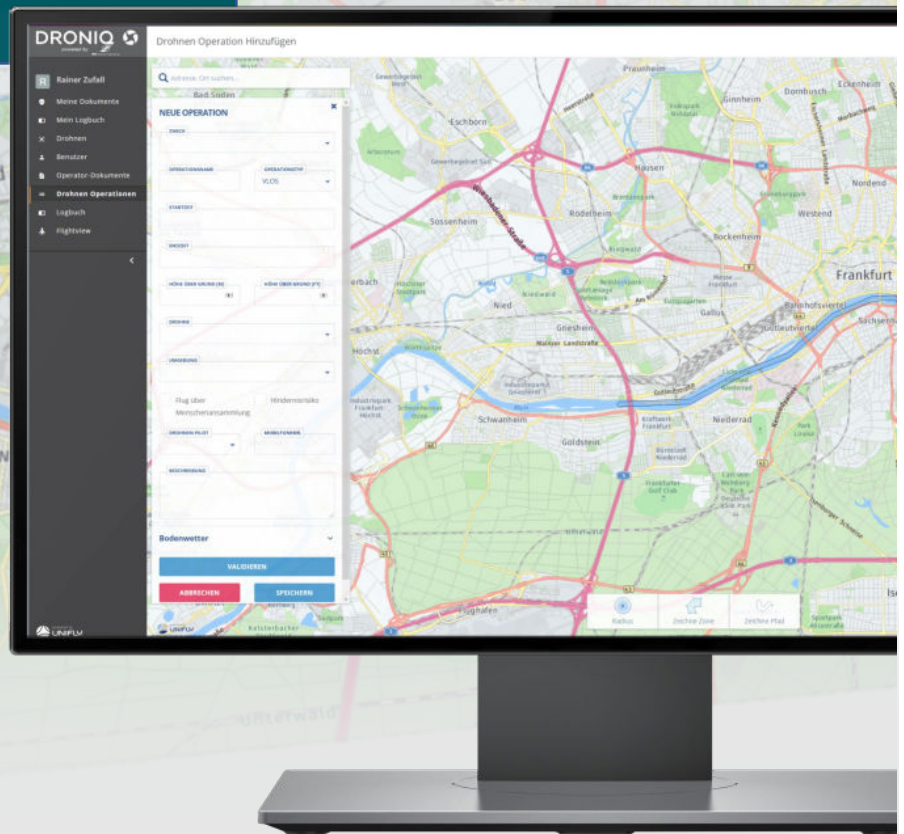
Purpose of use: Droniq's Traffic Management System (UTM) allows UAS to be fully integrated into the airspace. The UTMpro variant supports commercial users in planning, executing and evaluating their drone flight: The entire mission registration can be carried out via the UTM, including planning, document upload as well as flight inspection and subsequent release. During the flight, a live aerial situation image shows the current position of the drone and the surrounding air traffic at any time (this is made possible by the interaction of UTM

and Droniq's HOD4track). Via his UTM access, the pilot can keep an eye through the airspace at all times and is informed about all relevant flight activities. If a collision is imminent, he receives an early warning. The UTM also warns the remote pilot of airspaces that are off-limits to drones (e.g. airports). After the flight, the pilot can evaluate his flight via the UTM.

In addition to the pro version, there is also the UTMagent version. This version is aimed specifically at authorities and organizations with security tasks.

Product features:

- Real-time display of aircraft movements in a defined area over Germany.
- All relevant aircraft movements are displayed in the lower airspace.
- Multisensor data fusion is used to acquire data sources such as primary/secondary radar, ADS-B, FLARM or HOD4track.
- Users can track flight movement and view previous flight history and projected flight direction
- TrackViewer displays aircraft details (e.g. identification, speed, altitude and climb or descent rates).
- Aircraft (aeroplane, helicopter, drone) are visually differentiated.



Basic geodata: © GeoBasis-DE / BKG (2020) Terms of use:
http://sg.geodatenzentrum.de/web_public/nutzungsbedingungen.pdf

Basic geodata: © Federal Agency for Cartography and Geodesy (2020) Data sources:
http://sg.geodatenzentrum.de/web_public/Datenquellen_TopPlus.pdf